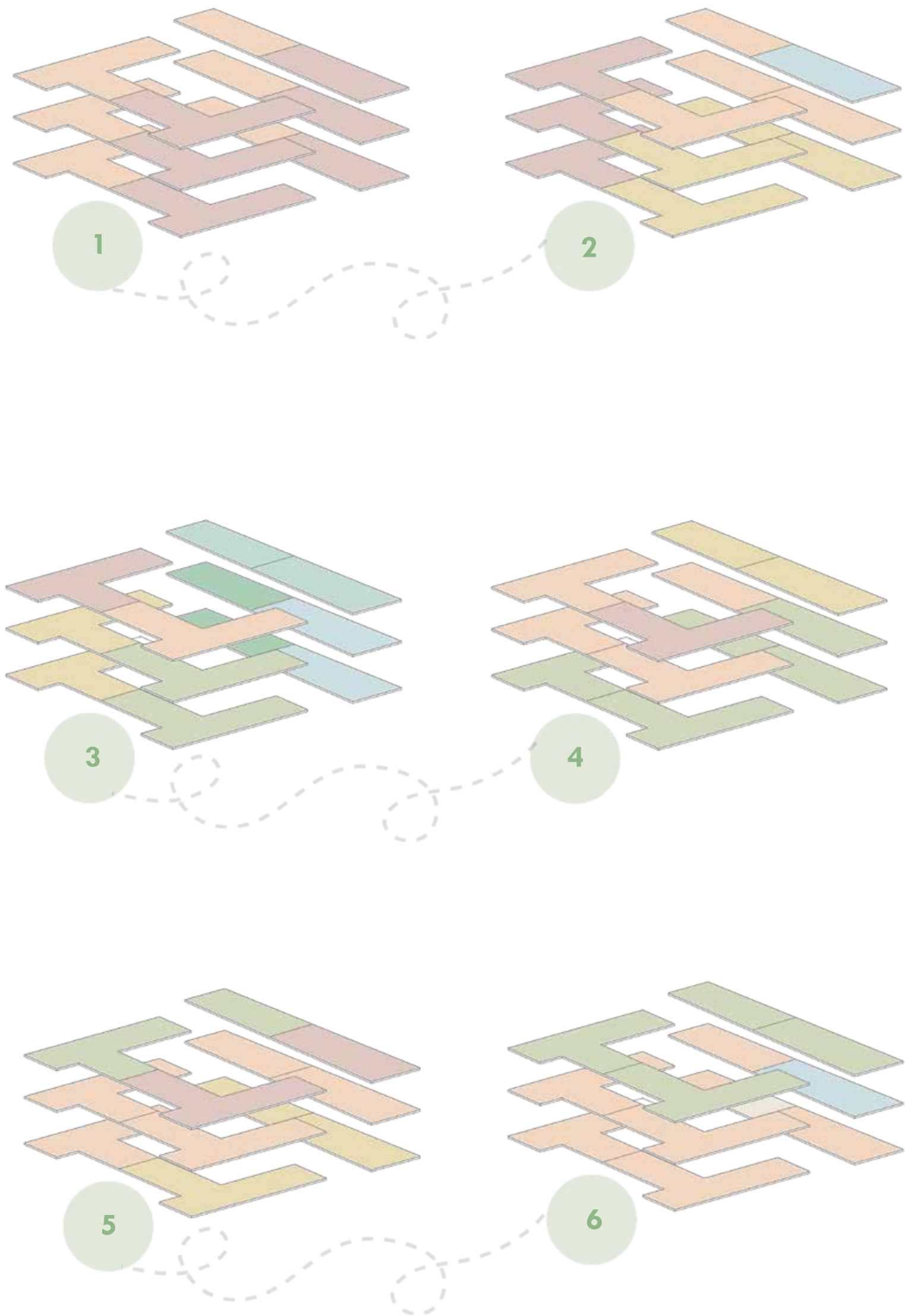


## adaptable multigenerational housing

The demand for age inclusive communities grows from the strong desire among the elderly to remain rooted in their communities. At the same time, many cities and towns are also dealing with an expanding youth population. Shifting demographics imply changing needs and calls for a new planning approach. Traditional planning methods that focus almost exclusively on able-bodied, tax-paying adults have left communities ill prepared to meet the unique needs of two age groups with distinct needs and desires: children and seniors. To compound matters, many communities are faced with shrinking budgets and are forced to do more with less, often leading to cuts in much needed services. Multigenerational planning gives attention to both formal services, provided by the market and government, and the role of informal networks of family, friends, and neighbors. Informal networks are useful in many different types of service delivery ranging from transportation, to caregiving, to home maintenance and repair. These informal networks allow all members of the community to become self-supporting and can provide new opportunities for alternative forms of formal service delivery. the goal of this community is to provide affordable, accessible housing, convenient access to transportation, access to community services, and opportunities for engagement for all residents, regardless of age or ability.



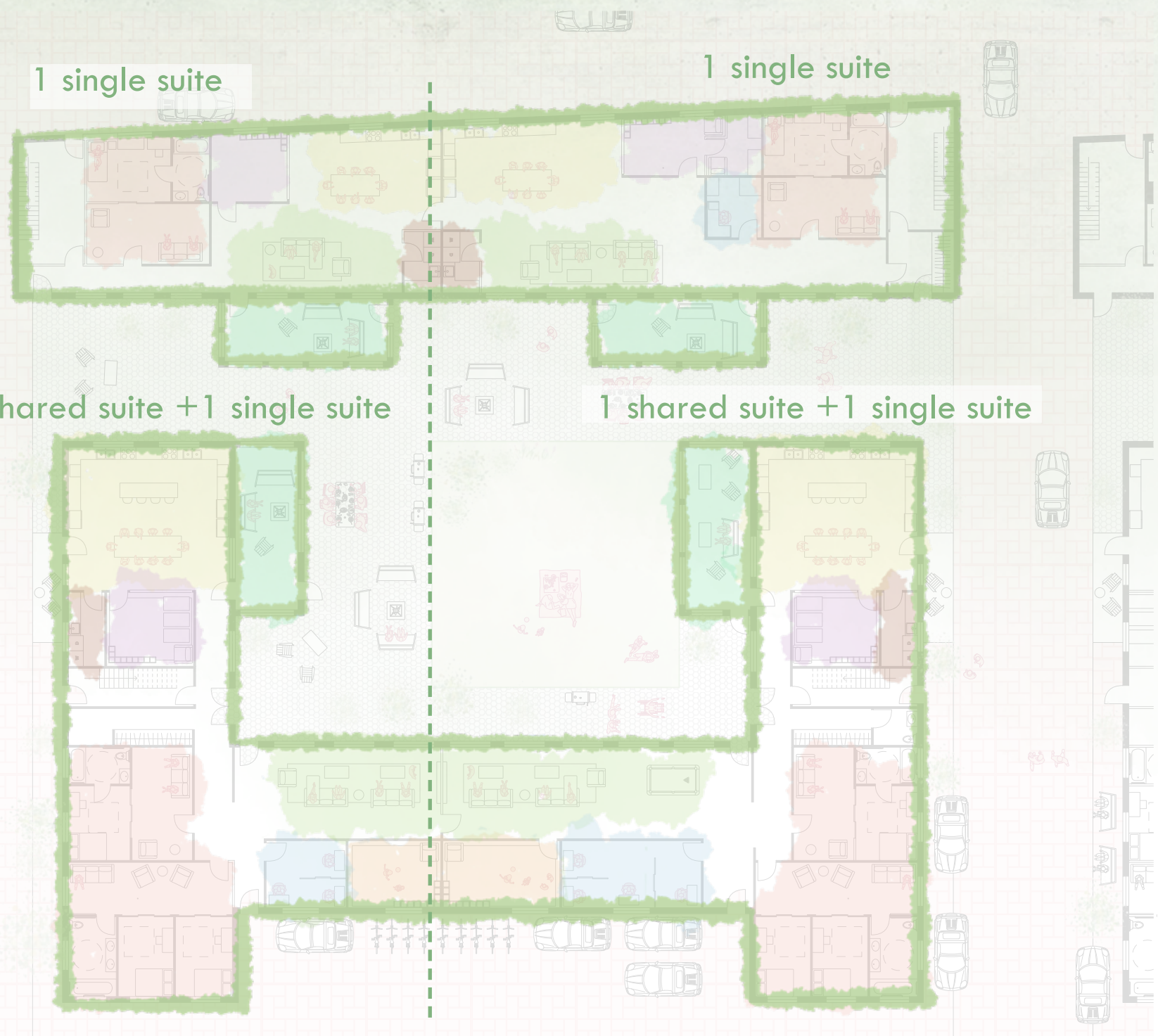
adaptable housing model

same color  
=  
same family





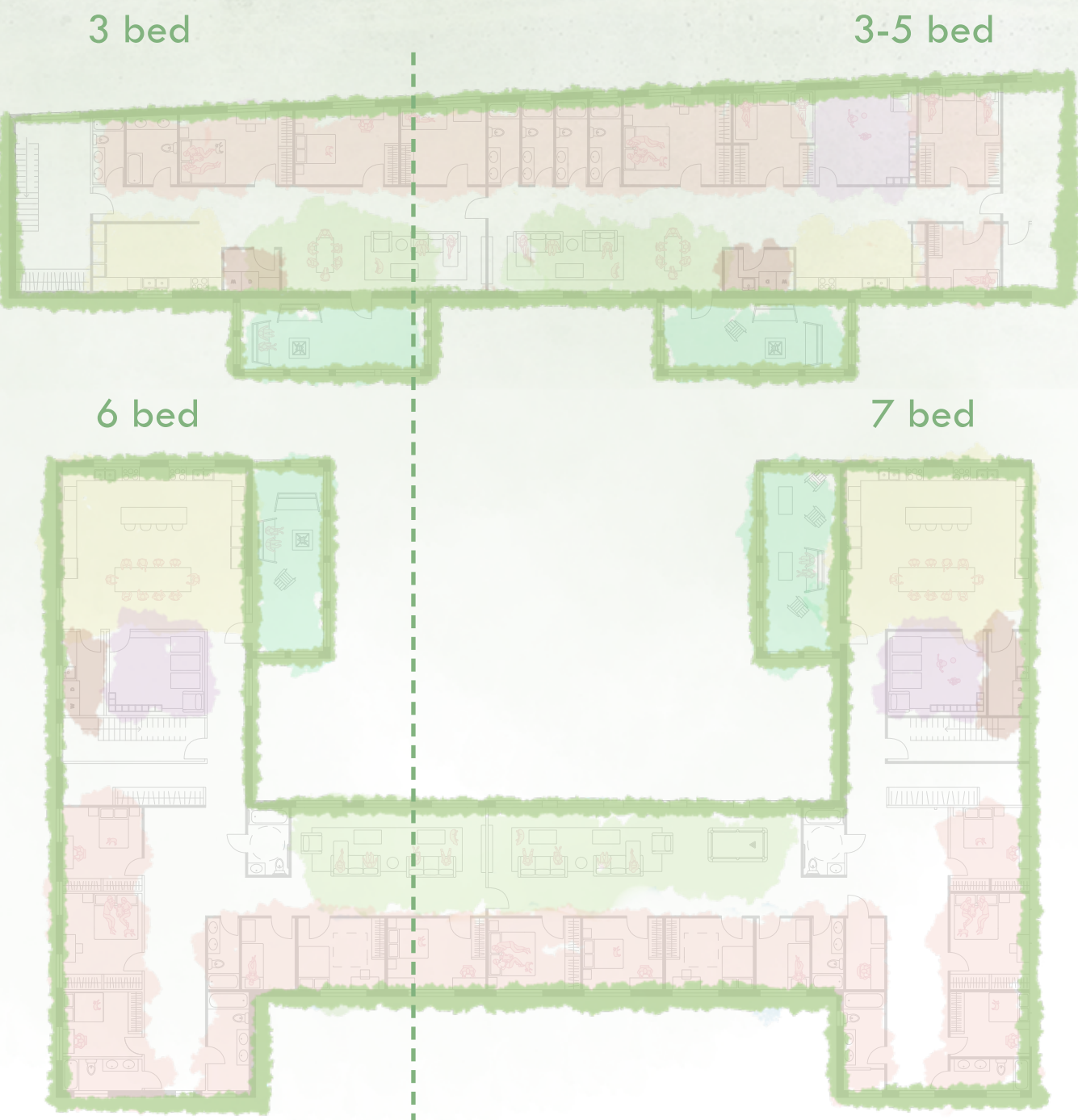
building program



ground floor

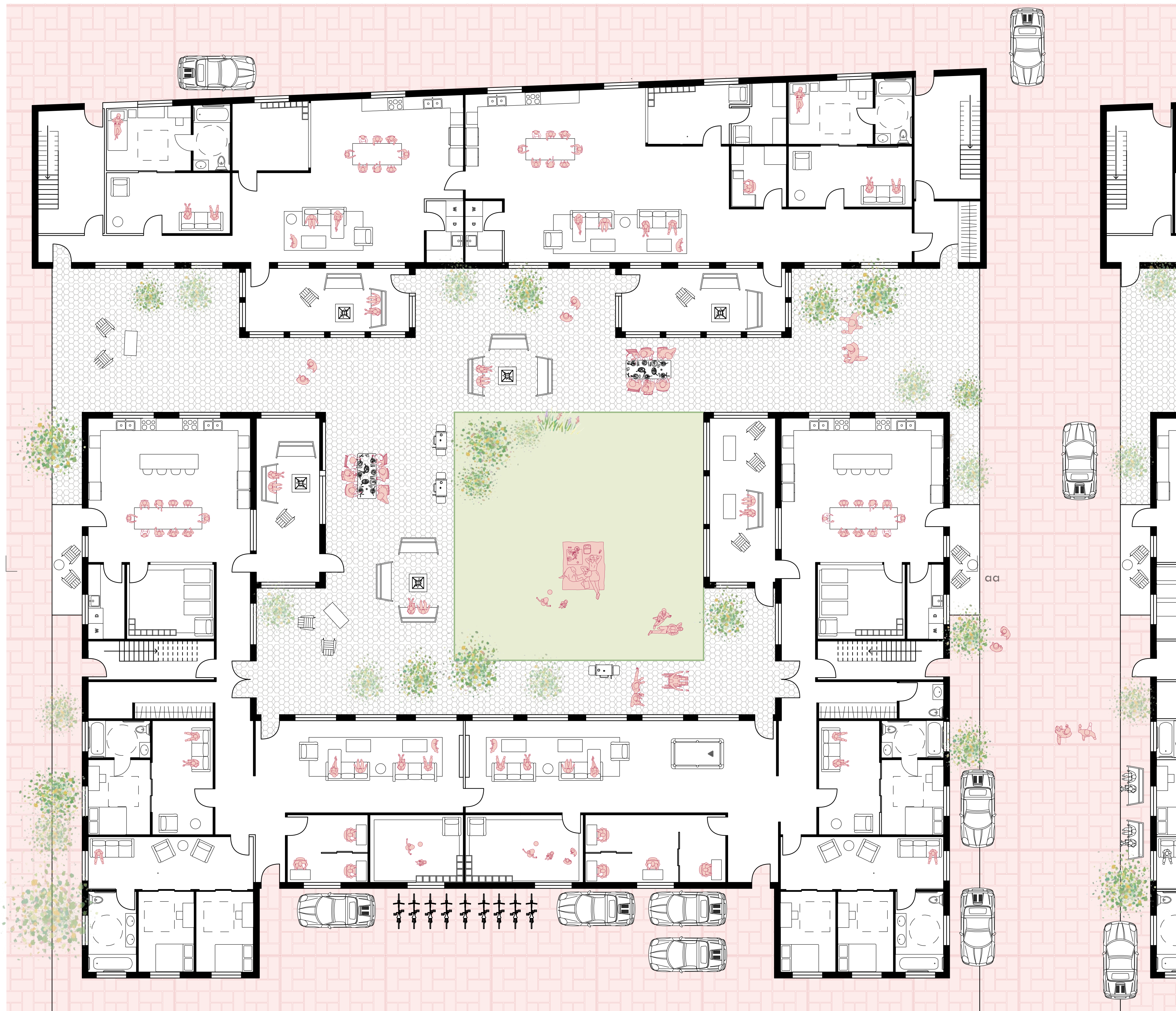


2nd floor

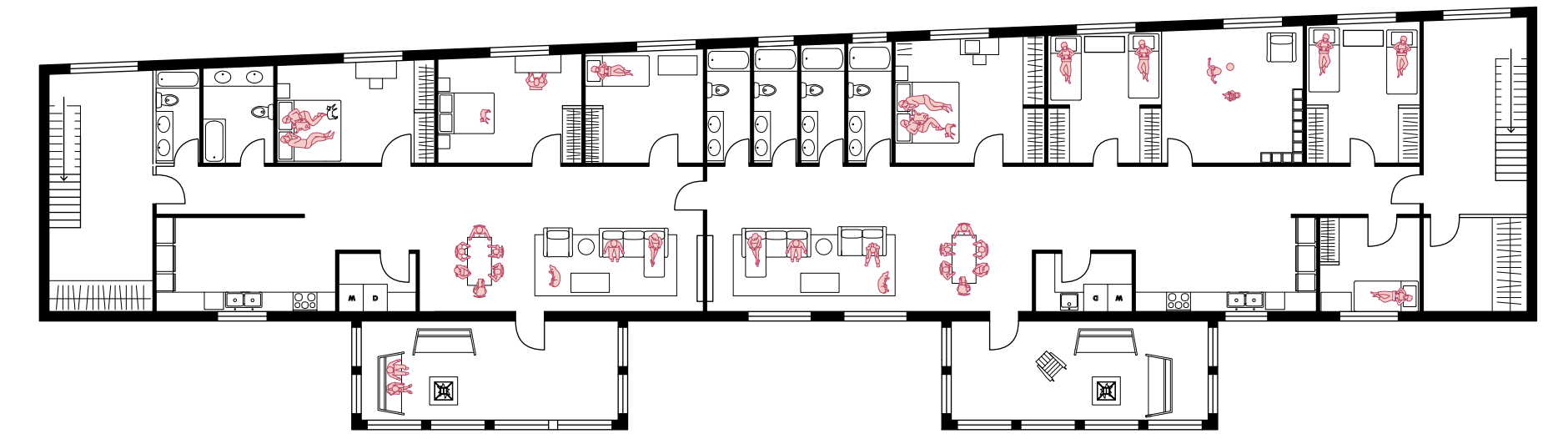


3rd floor

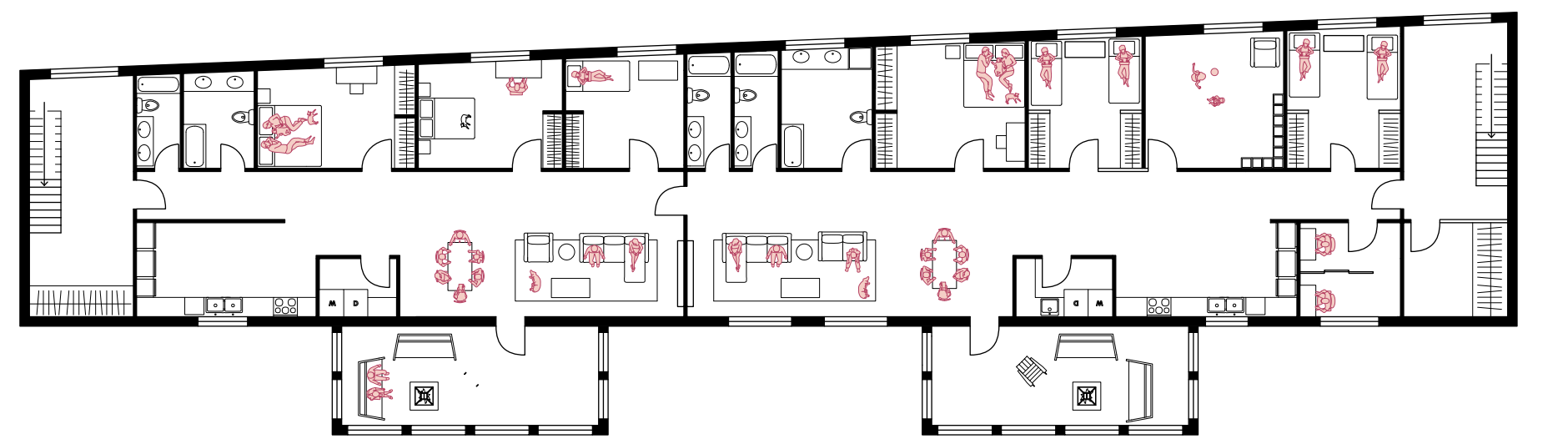
- cooking/dining
- living
- private
- rooms for children
- study rooms/offices
- laundry
- indoor balcony



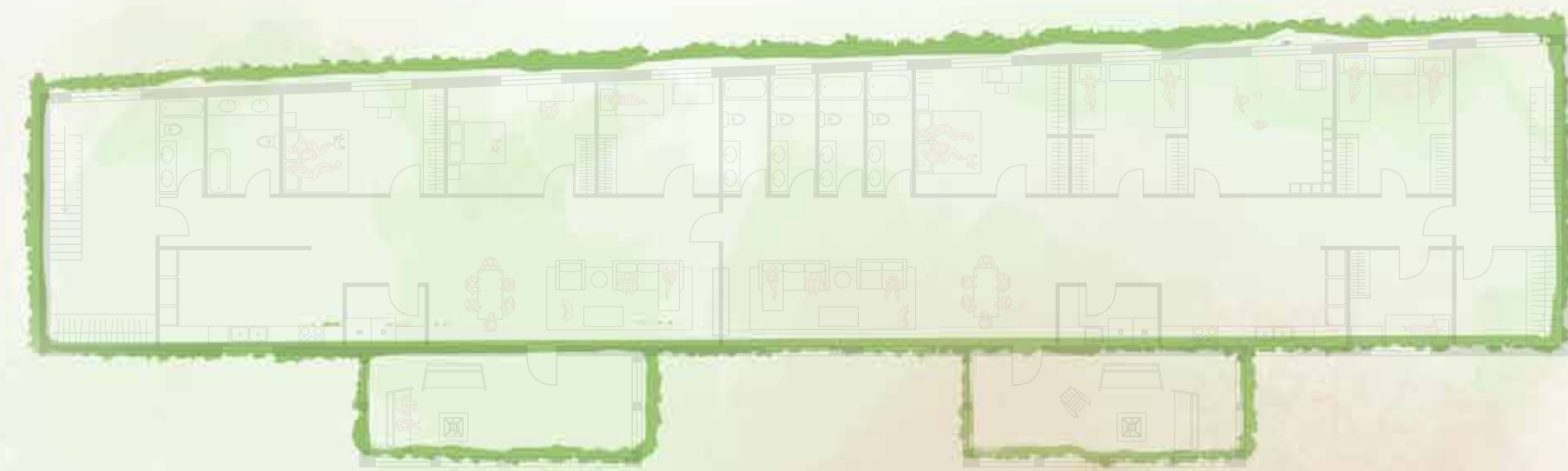
ground floor | 1:100



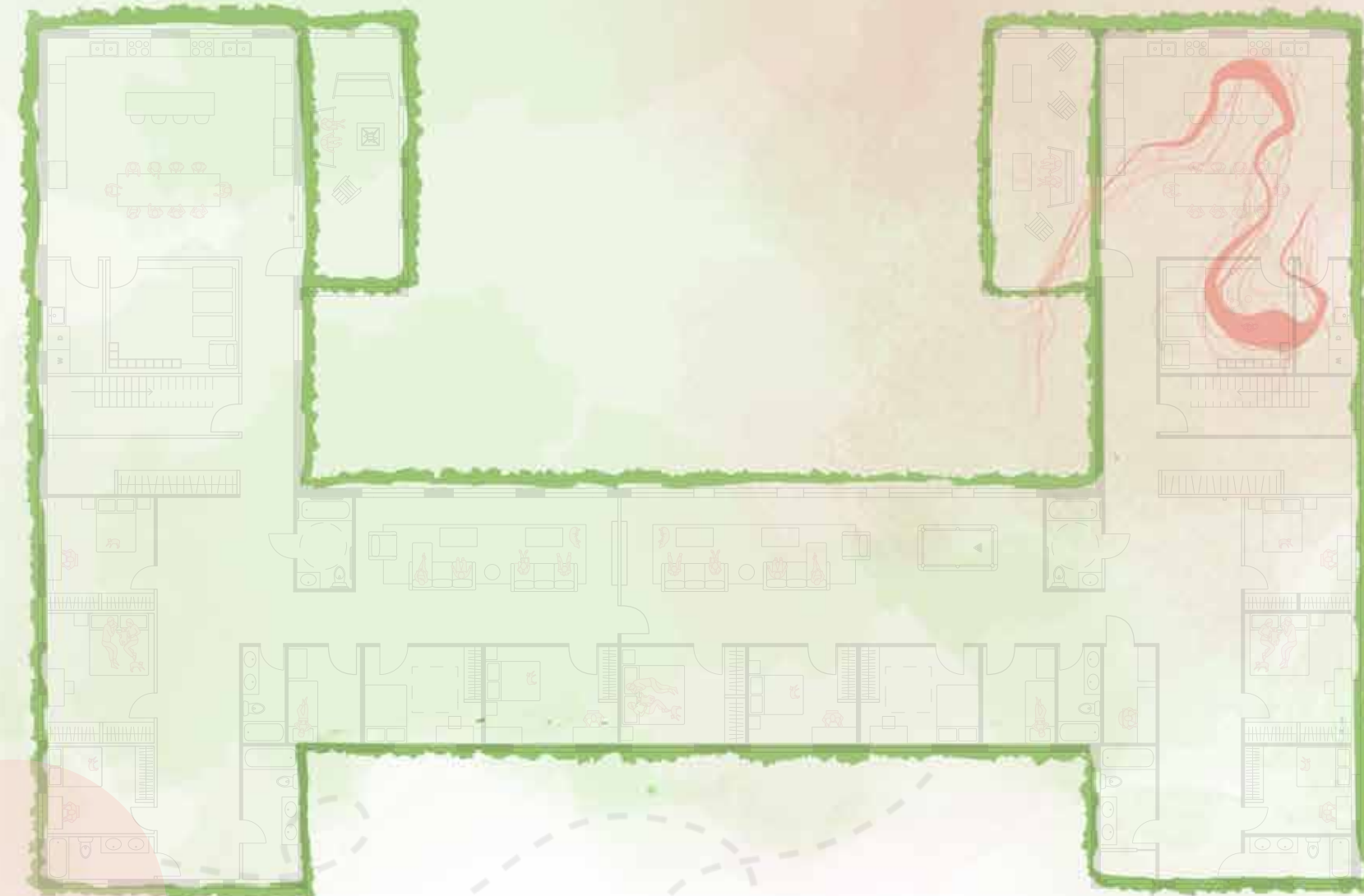
second floor | 1:200



third floor | 1:200



\*congregation of chores\*



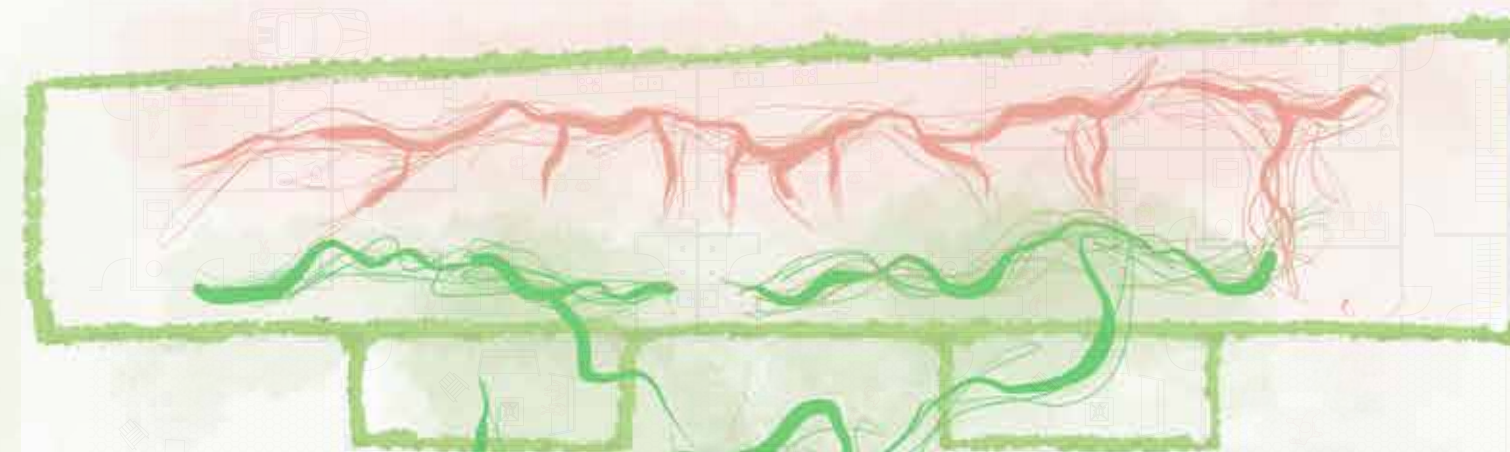
caretaker



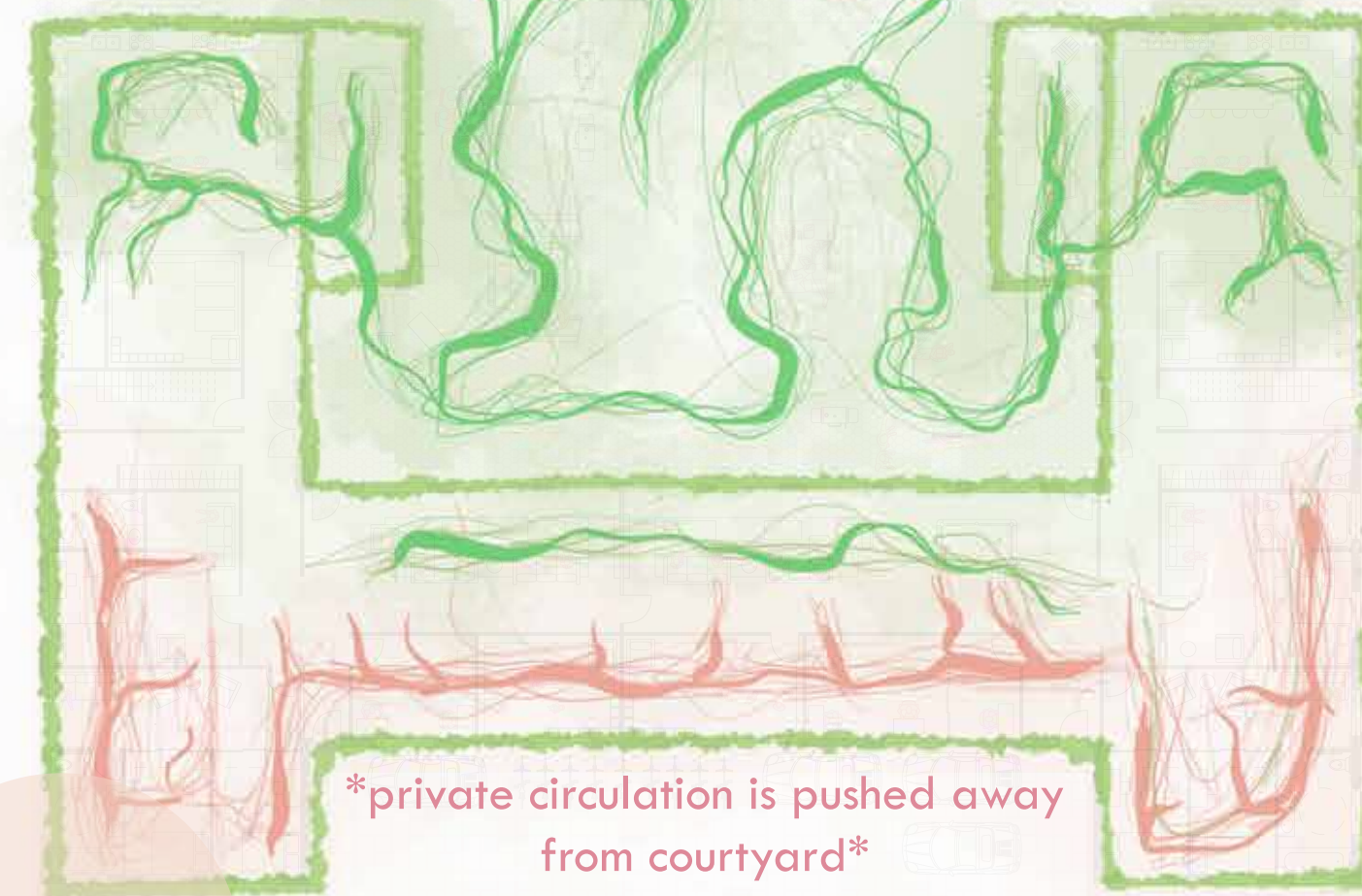
\*central proximity to all programs\*



grandparent



\*private circulation is pushed away from courtyard\*



public vs. private



kitchen looking into children's playroom

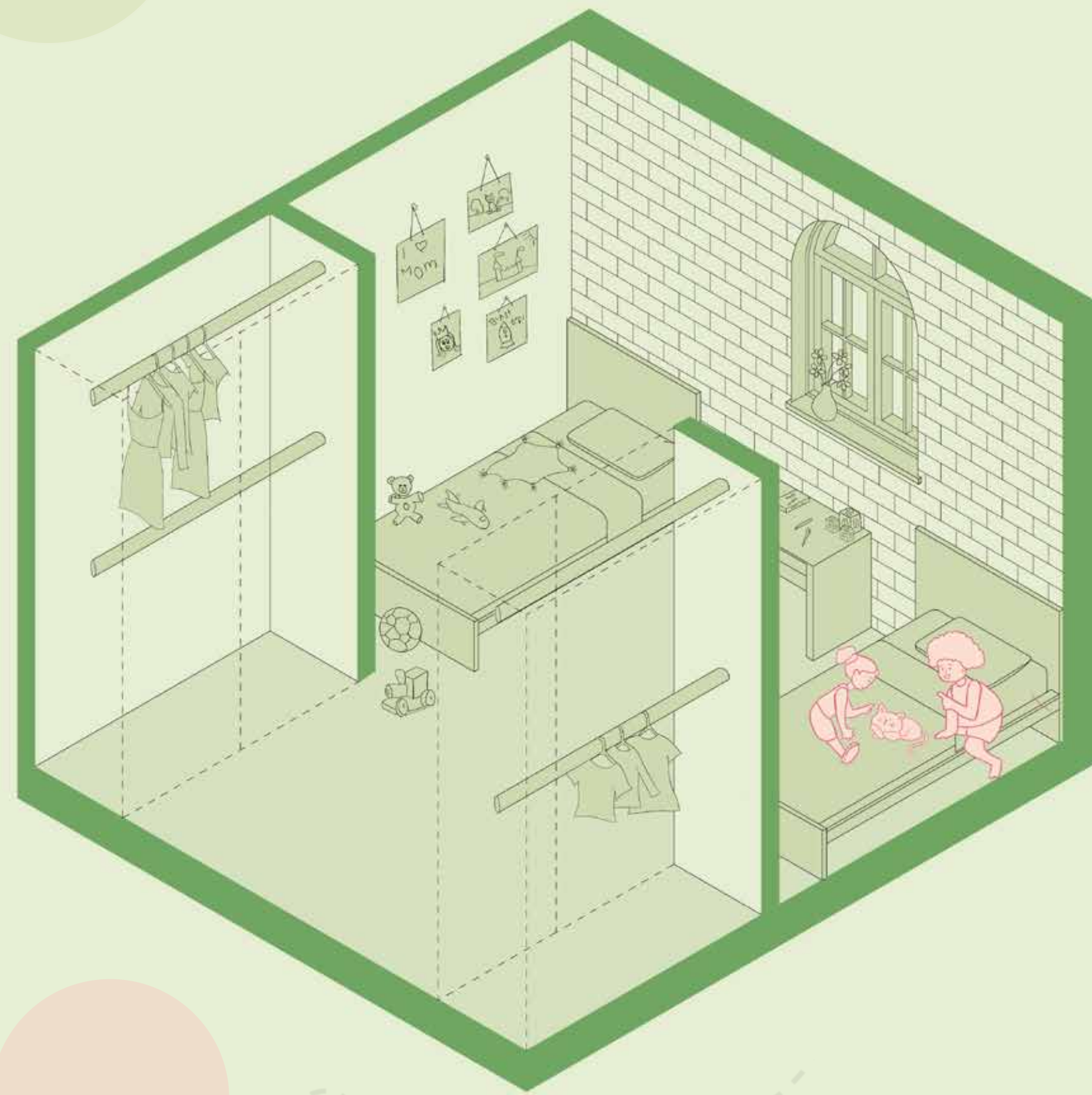


personal: semi- private, all seasons, & customizable



shared: public & non customizable

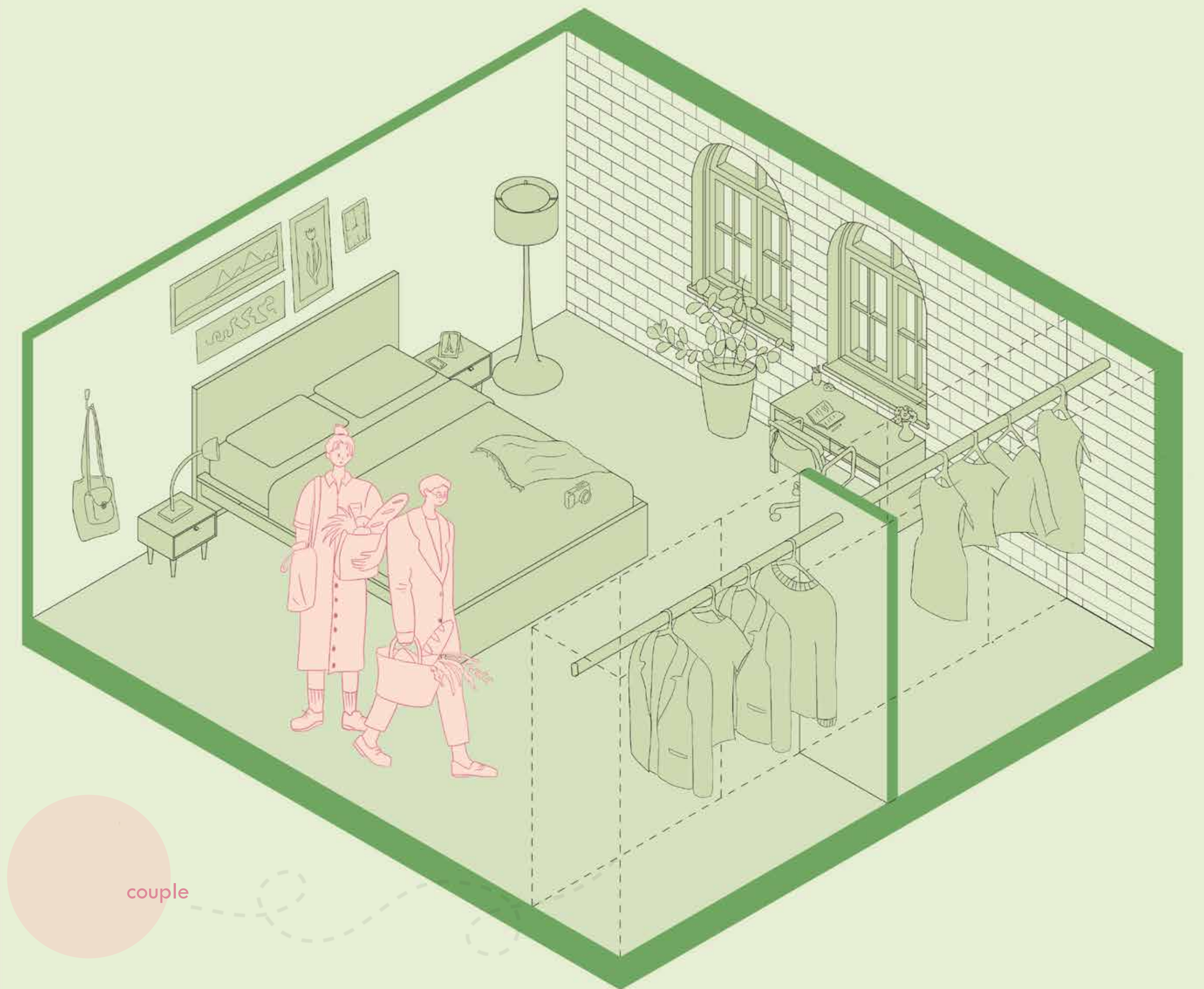




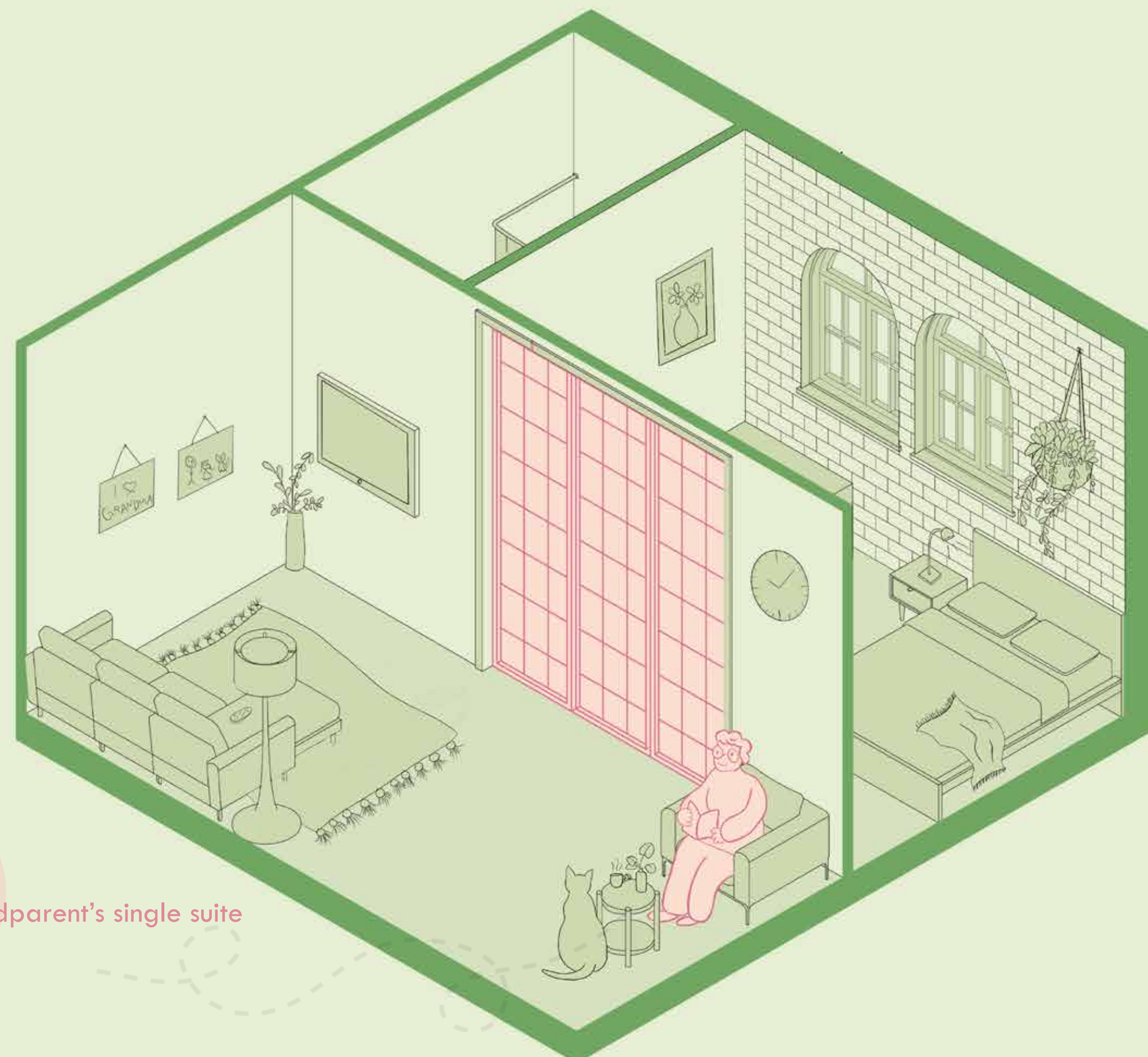
children



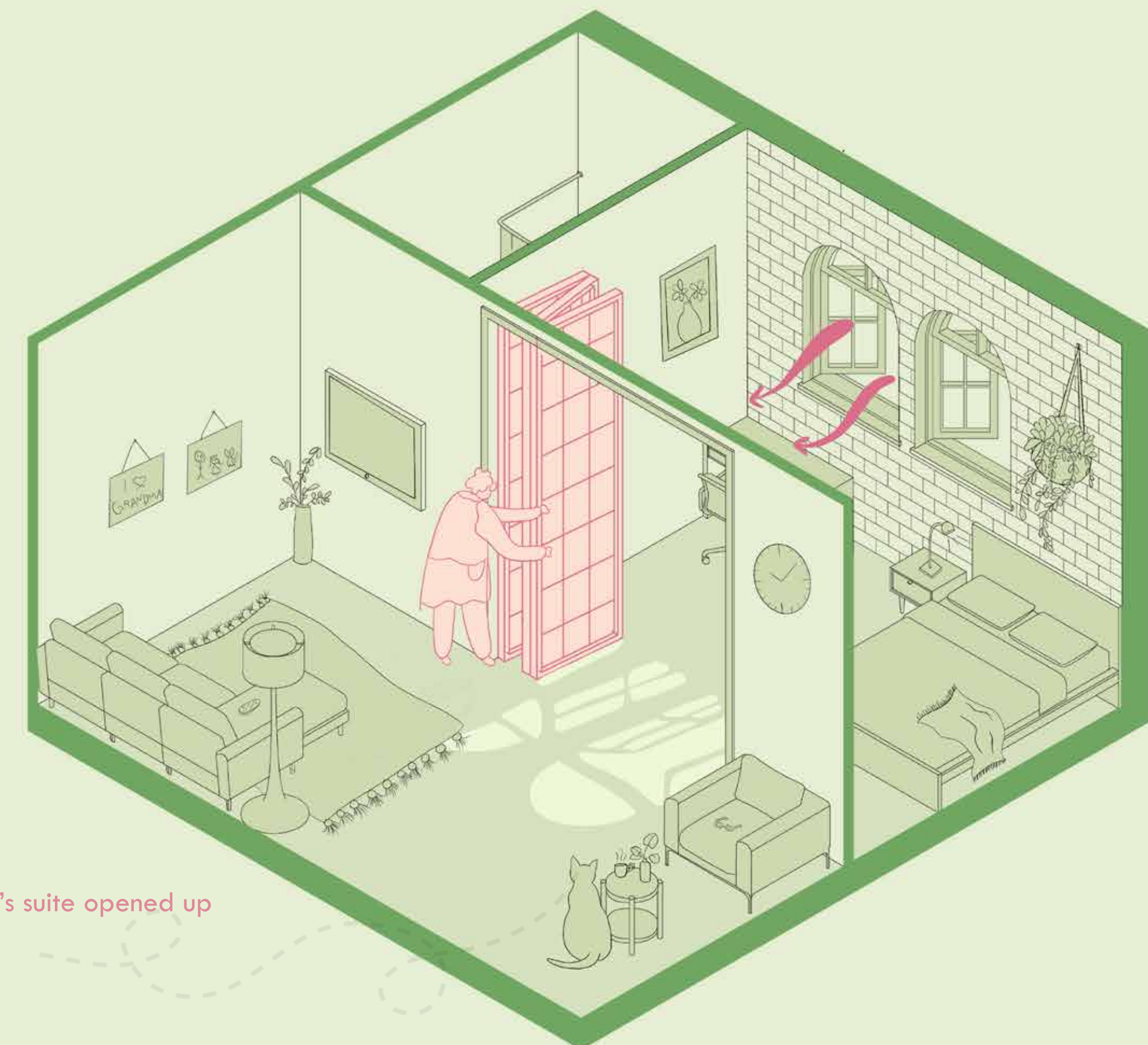
teenager



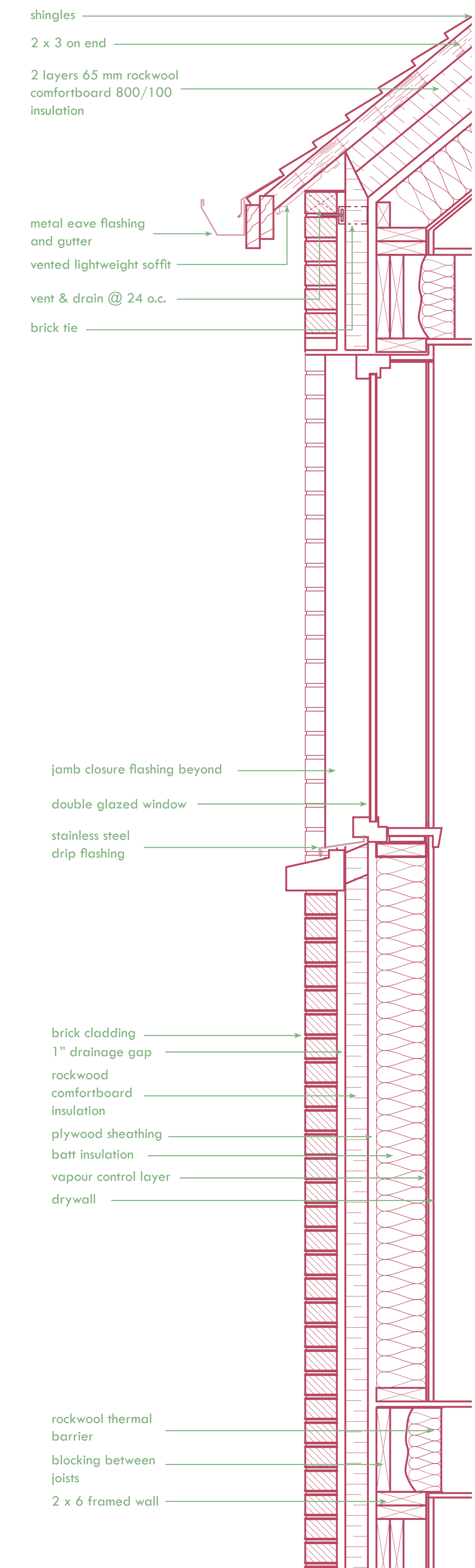
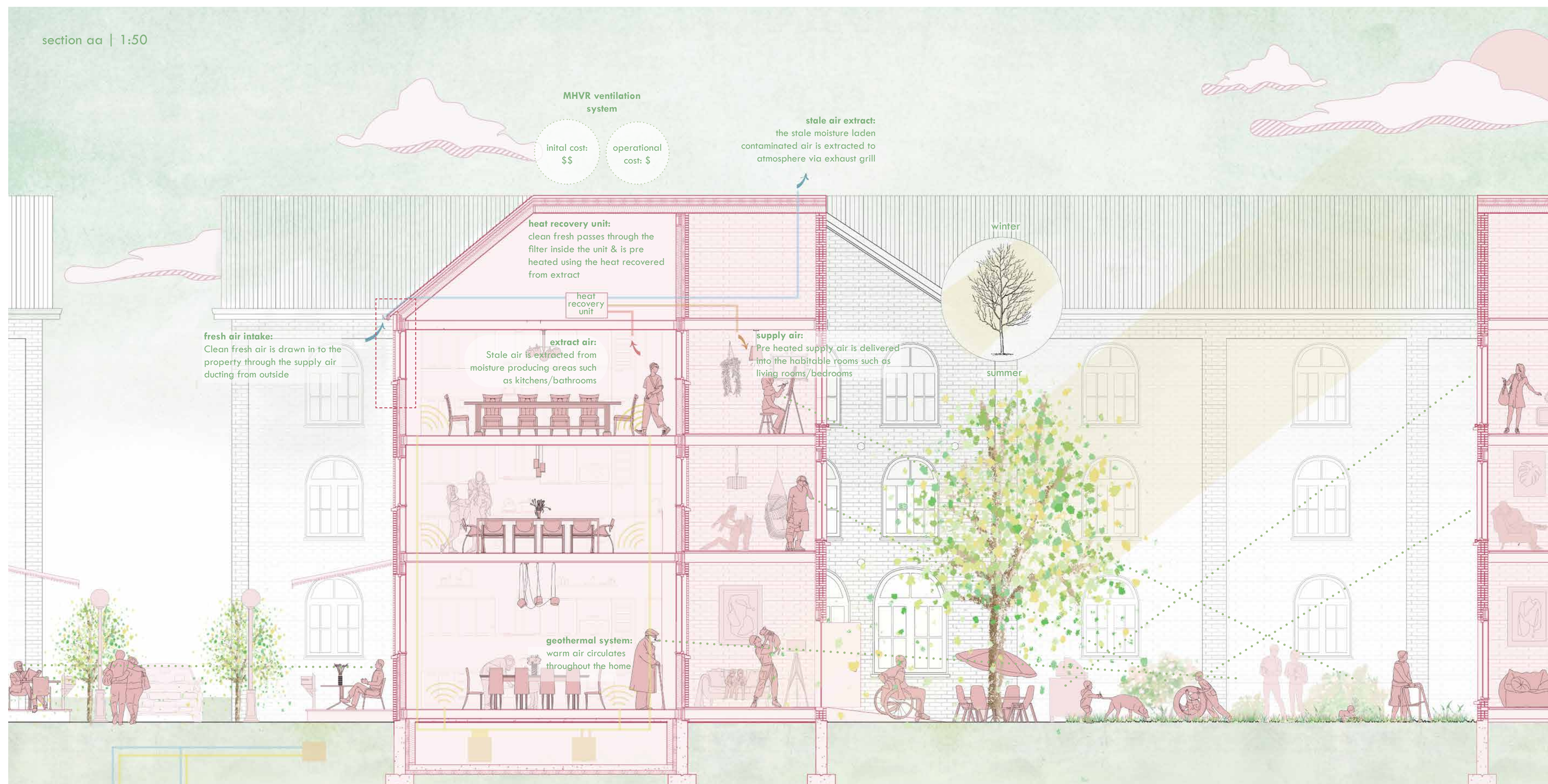
couple



grandparent's single suite



grandparent's suite opened up



recycling: easy & common to recycle brick vs other materials



extraction of raw materials: made from clay and shale, abundant natural resources



production: made at brampton brick



transport: low transportation cost + impact as brampton brick is close in distance to site



construction



use: durable & long lasting, (ideal for affordable housing) natural sound barrier, fire resistant



demolition



waste disposal